

PaveX™ Expanda™ HD

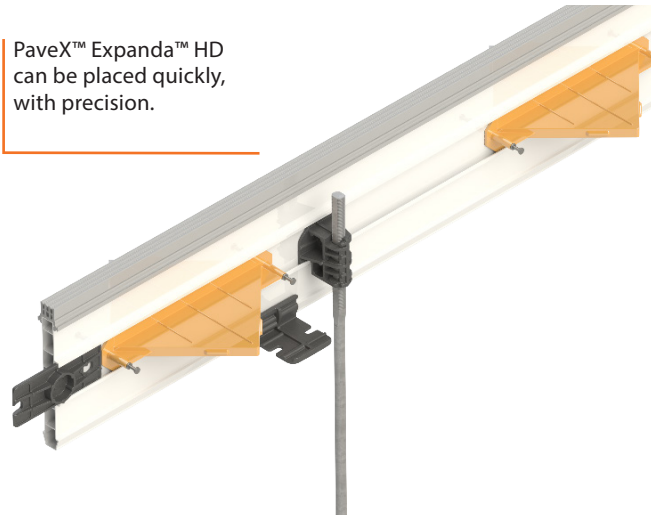
Installation Guide

Product Description

PaveX™ Expanda™ HD is a core component the broader PaveX™ Residential Pavement eco-system. Designed specifically for use in heavy duty pavement applications including service vehicle cross-overs, driveways, shared bikeways and urban streetscapes. PaveX™ Expanda™ HD is a lightweight, modular expansion joint system that is quick & easy to install.

Designed for use with 6mm Danley™ Diamond™ Galvanised Dowels & Sleeves at 450mm centres, PaveX™ Expanda™ HD provides high capacity load transfer between pavement sections to the requirements of AS 3727.1:2016 Residential Pavements. The unique design of the uPVC extruded PaveX™ Expanda™ HD 150mm sacrificial formwork profile provides up to 10mm of thermal expansion of concrete and is job site tough.

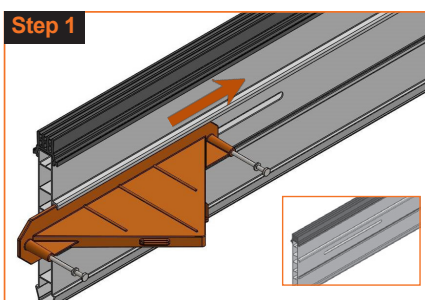
PaveX™ Expanda™ HD can be placed quickly, with precision.



Compliance:

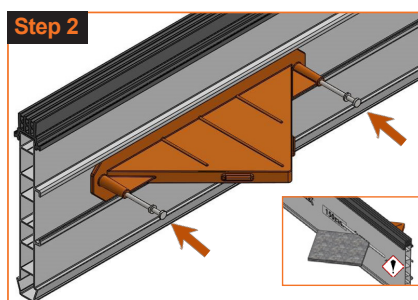
PaveX™ Expanda™ HD complies with the requirements of AS 3727.1:2016 Residential Pavements.

Installation Guideline



Step 1 Install 6mm Diamond™ Dowel Sleeves prior to installing stake brackets and placing PaveX™ Expanda™ expansion joint into position.

Slide one sleeve along the channel for each of the pre-cut slots on the PaveX™ profile.



Align the 6mm Diamond™ Dowel sleeve with the pre-cut slots.

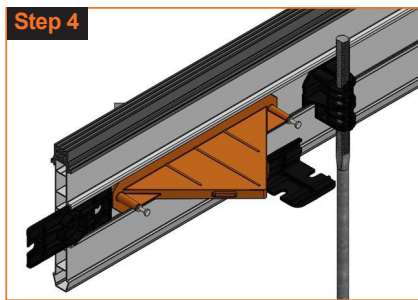
HINT: Partially insert a loose Diamond™ Dowel in the slot to assist with sleeve alignment.

Hammer the sleeve into position using the supplied nails.

USE CAUTION: Nails will protrude through the opposing face of the profile.



Step 3 6mm Diamond™ Dowels to be placed into the slots with the tips of the dowel just touching the face of the PaveX™ profile.



Step 4

Follow the remaining installation steps as outlined in the PaveX™ Joint System Product Guide.

Need more information? Contact the Danley™ Customer Service Team.

AUS: 1300 326 539 | NZ: 0800 88 22 55 | E: sales@danley.com.au | W: www.danley.com.au