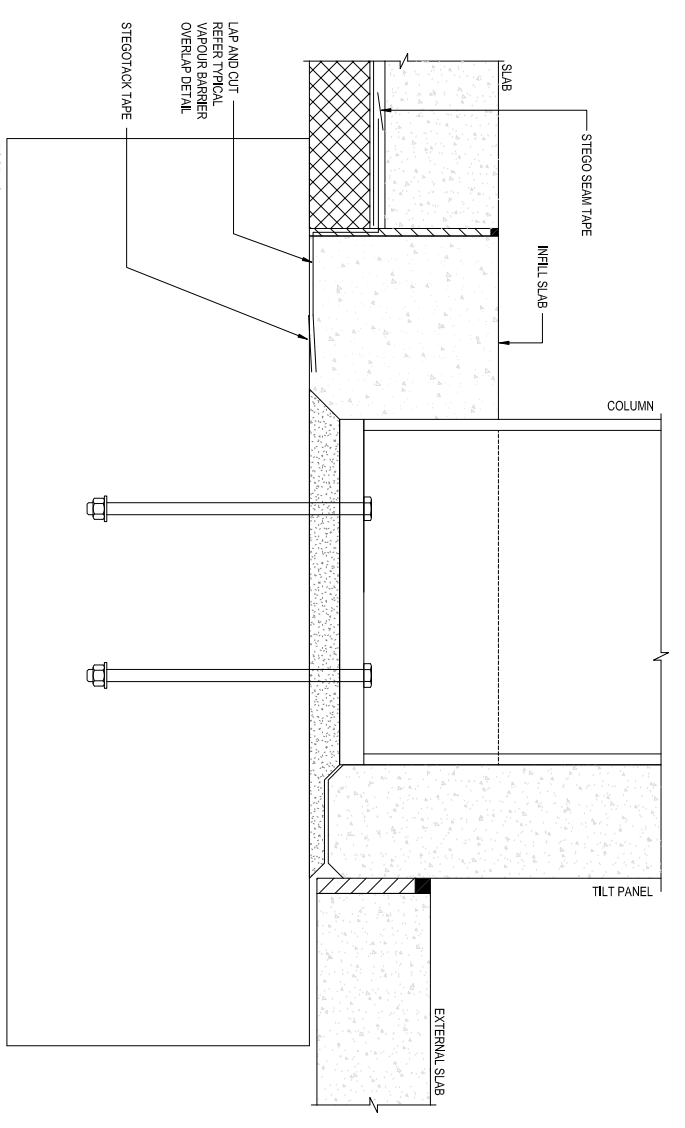


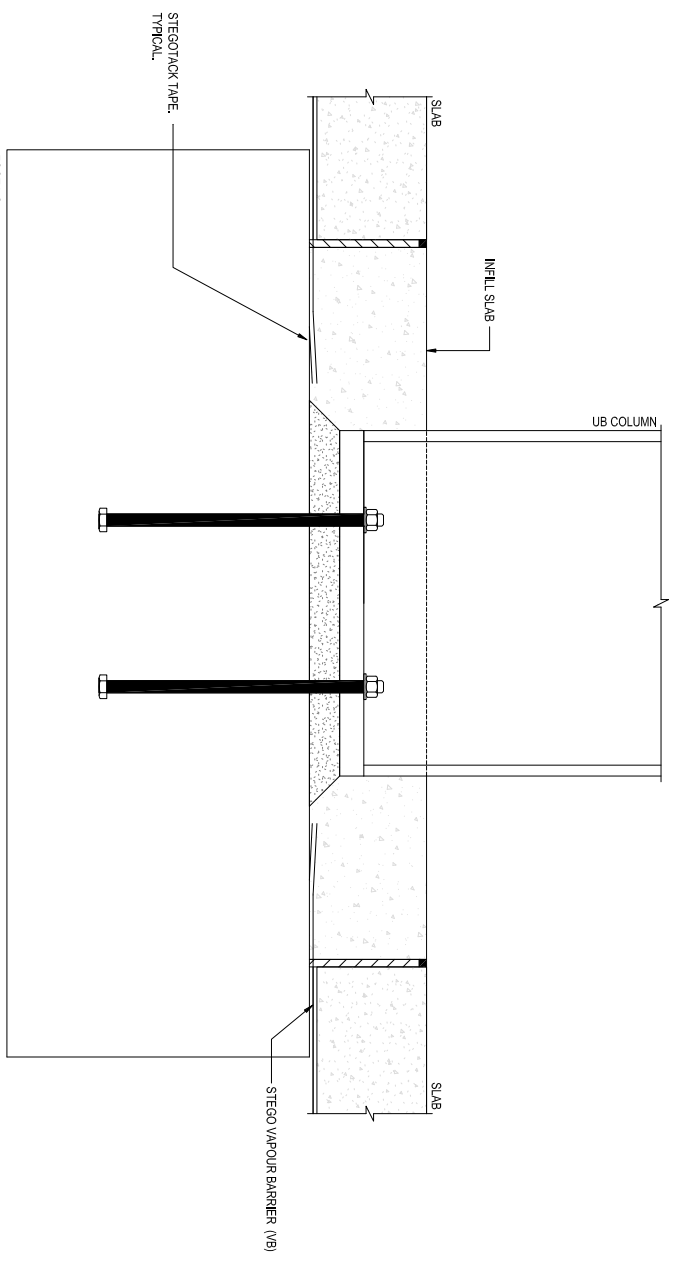
ZONE	STATUS	REV.	DESCRIPTION	D.C.P.	DATE	DRAWN BY	VERIFIED BY
-	EP	1	FOR RELEASE	-	26/10/18	DL	SD

**REVISIONS**



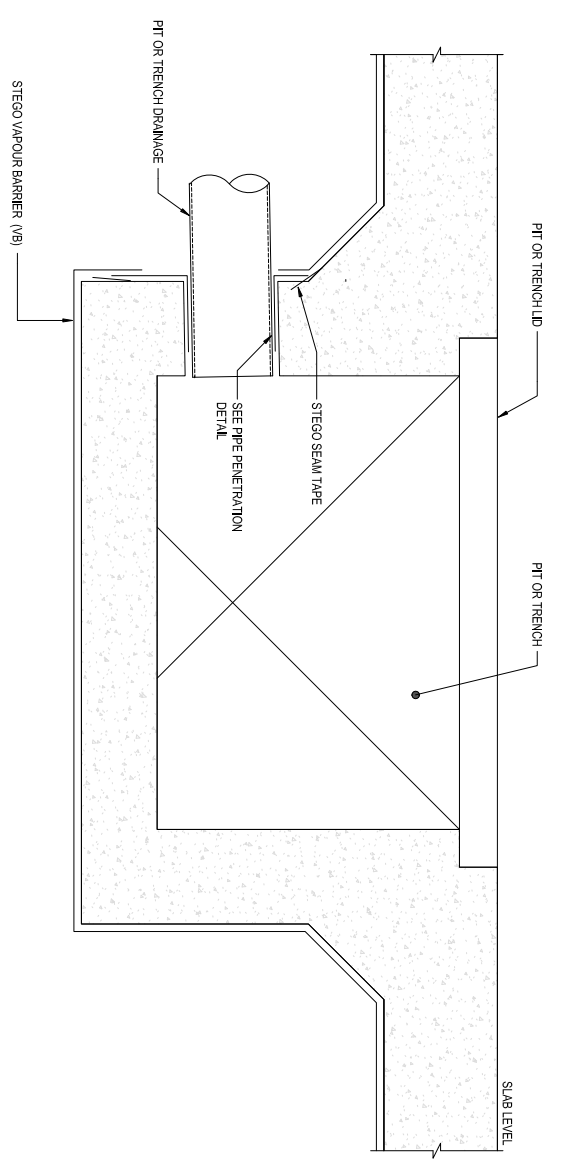
**INTERFACE BETWEEN SLAB WITH SUBBASE, COLUMN AND FOOTING**  
SCALE 1:10

NOTE: REMOVE LOOSE DEBRIS PRIOR TO INSTALLING STEGO TACK TAPE.



**INTERFACE BETWEEN SLAB AND FOOTING AT GRADE**  
INTERFACE OF SLAB TO PILES ON GRADE SIMILAR  
SCALE 1:10

NOTE: REMOVE LOOSE DEBRIS PRIOR TO INSTALLING STEGO TACK TAPE.



**TYPICAL JUNCTION AT PITS AND TRENCHES**  
SCALE 1:10

**NOTES:**  
**STEGO VB** DENOTES STEGO VAPOUR BARRIER CLASS A (ASTM E1745) 0.38mm (381um) NON-RECYCLED VIRGIN POLYOLEFIN RESINS, MAINTAINS PERFORMANCE OF LESS THAN 0.01 PERMS. USE ONLY SYSTEM SPECIFIC SEALING AND PERIMETER TAPES.

DESCRIPTION	DRAWN	VERIFIED	APPROVED
STEGO INSTALLATION - GENERAL DETAILS	DL	SD	-

DESCRIPTION:

**STEGO INSTALLATION - GENERAL DETAILS**

SIGNED:	DATE:	CAD FILE:	DRAWING NO.:
DL	26/10/18	Stego Installation - General Details - Sheet 2	G-00-02

SHEET: 2 OF 3	SCALE: 1:10	REVISION: 1
---------------	-------------	-------------



21 STEEL PLACE, MORNINGSIDE QLD 4170.  
A DIVISION OF ITW AUSTRALIA PTY. LTD.  
TEL: 1300 DANLEY (1300 326 539) FAX: (07) 3899 1733  
EMAIL: sales@danley.com.au  
WEB: www.danley.com.au

THE INFORMATION CONTAINED IN THIS DRAWING IS THE SOLE PROPERTY OF RAMSETREID (ITW) AUSTRALIA.  
DO NOT SCALE THIS DRAWING.